

**SonoScape**

**SMART IMAGING,  
HEARTFELT CARE  
-WHEREVER  
THEIR JOURNEY LEADS**

**VET**

**SonoScape**

SonoScape Medical Corp.

2F, 12<sup>th</sup> Building, Shenzhen Software Park Phase II, Keji Middle 2<sup>nd</sup> Road,  
Nanshan District, Shenzhen 518057, Guangdong, China  
Tel: +86-755-26722890 Fax: +86-755-26722850  
Email: market@sonoscape.net www.sonoscape.com

© 2025 SonoScape Medical Corp.  
All rights are reserved.

SonoScape Medical reserves the right to change the  
above information and discontinue any product at any  
time without prior notification and will not be liable for any  
consequences resulting from the use of this publication.

U-PEX20250328



**ProPet X11/E11**

# Revolutionizing Veterinary Diagnostics with **C-Field+™** Technology

Introducing the first portable ultrasound system powered by the revolutionary C-Field+™ platform, setting new standards in diagnostic imaging. Delivering unmatched image clarity and ultra-fast signal processing, ensures precise, reliable, and real-time diagnostics.

Equipped with cutting-edge veterinary software and optimized workflows, it embodies our commitment to Smart Imaging, Heartfelt Care - Wherever Their Journey Leads. With unparalleled performance and adaptability, this innovative system empowers veterinarians to provide exceptional care across all diagnostic applications.

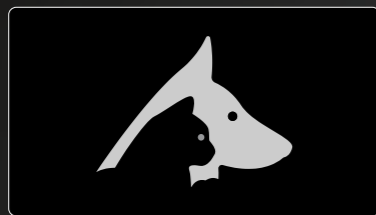


# CATERING TO VETERINARIANS' DAILY PRACTICE

## PRE SCAN

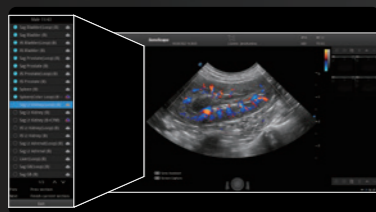


Probe Auto-Wake



SonoPatient

Professional Patient Information Management Interface, which features embedded species-specific and weight-based BSA (Body Surface Area) formulas tailored for diverse animal types and sizes.



SonoAssistant

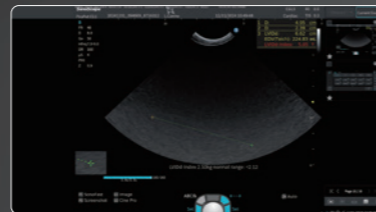
Guides clinicians through the entire exam and provides customizable scanning protocol helping streamline workflow while increasing standardization.

## DURING SCAN



SonoHelp

Designed specifically for veterinarians, this embedded software provides reference imaging planes and guidance on proper scanning techniques, with support for custom additions of images or videos.



SonoMeasure

SonoMeasure features built-in measurement reference ranges for animals of different sizes, automatically alerting to potential clinical symptoms for early detection and timely intervention.



SonoFast

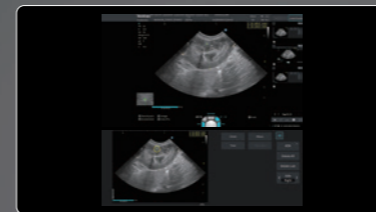
SonoFast is the first to integrate AFast, TFast, and VetBlue protocols into the workflow, streamlining emergency care for faster and more accurate veterinary diagnoses.



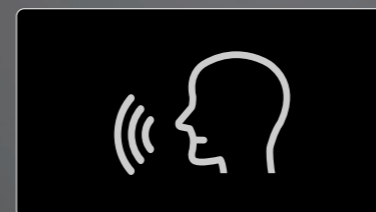
SonoMagnifier



SonoSynch



Dual-screen measurement



Voice Control

## POST SCAN



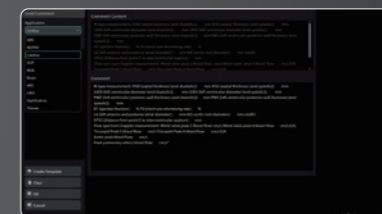
Scientific Research Tool

Enables the export and analysis of raw data, which improves diagnostic flexibility and efficiency.



SonoTransfer

Enables direct PC transfer of PDF reports, images, and cine loops to a shared Windows folder for faster, more convenient transfers.



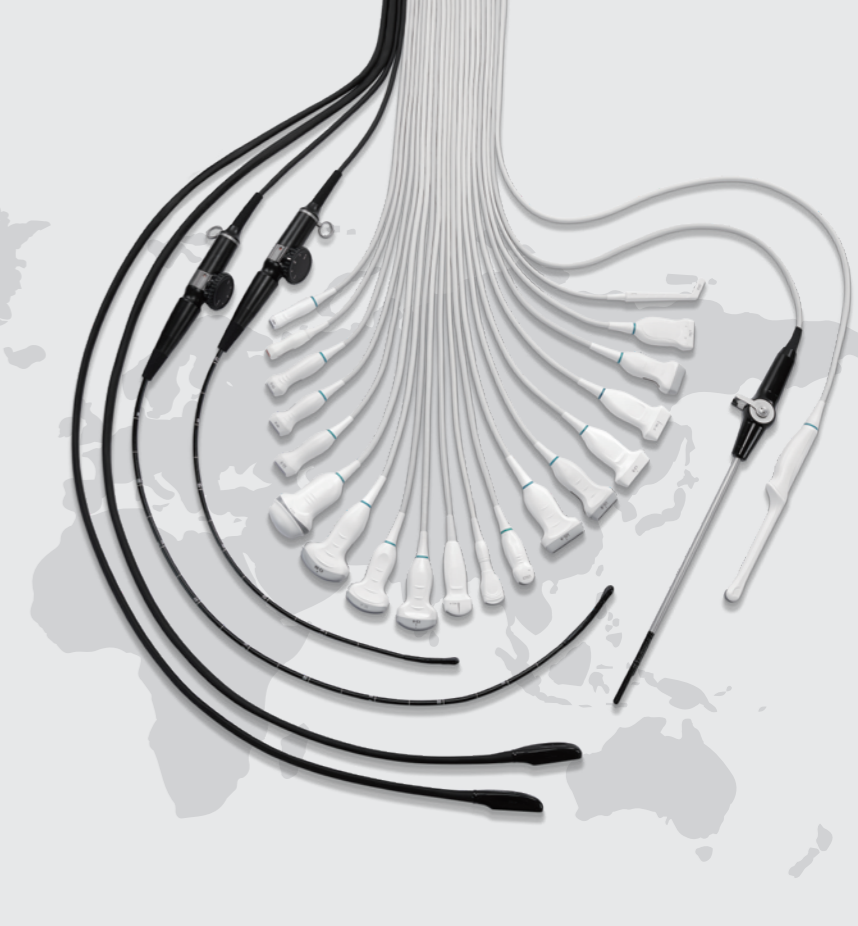
SonoReport

A built-in veterinary report template for ABD, Cardiac, URO, Ophthalmic, and REPRO applications, simplifying routine diagnoses for veterinarians.



## Tailored Transducers for Diverse Animals

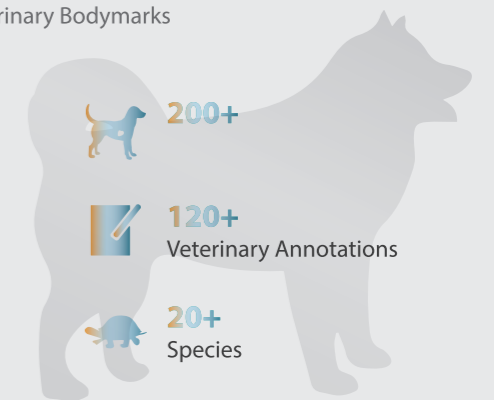
ProPet X11/ProPet E11 transducers cover all possible veterinary examinations and species, accommodating animals of various sizes. Specifically tailored transducers are also available for transrectal reproduction, ovum pick-up scanning, tendon and ligament scanning, TEE cardiac imaging, and even laparoscopic procedures.



## Dedicated Veterinary Software for Animal Care

Covers a full range of applications such as reproduction, cardiac, MSK, and so on, providing necessary tools to the user's needs, including Cornell & BSA animal specific formulas.

Covers 200+ veterinary bodymarks and 120+ veterinary annotations including small animals, equine, farm animals, lab animals, and exotic animals with more than 20 species. Veterinary Bodymarks



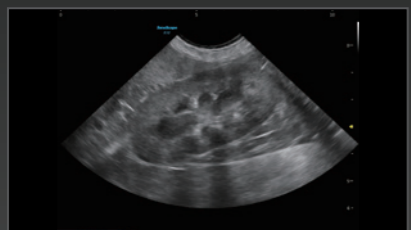
## Flexible and Intuitive Veterinary Exam Mode

Makes it easy to choose from a list of animal types, transducers as well as presets combination in one click. Veterinarians are able to user-define animal type and correspond graphic exam icon in system setting for specific veterinary application.

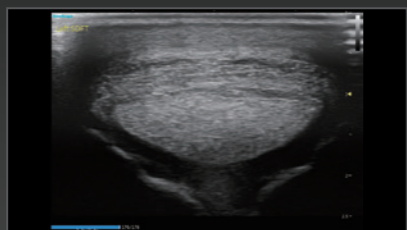




## Precision Imaging for Superior Abdominal and Superficial Care



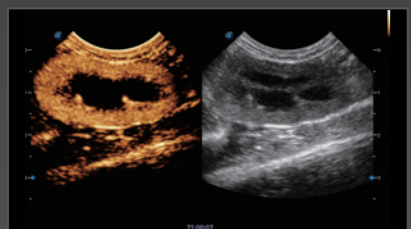
B Imaging



Equine Tendon

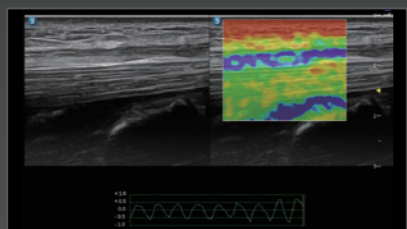


High-freq Probe



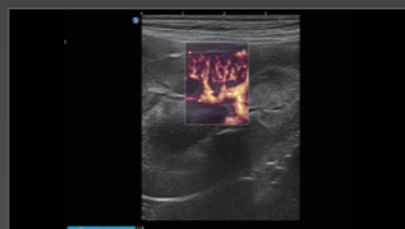
Contrast Imaging

Contrast HFR CEUS improves temporal resolution for tracking microbubble movement and blood perfusion in small lesions, supported by the micro-convex probe.



Strain Elastography

Real-time tissue stiffness assessment with color mapping to detect abnormalities, available on linear, convex, and micro-convex transducers.

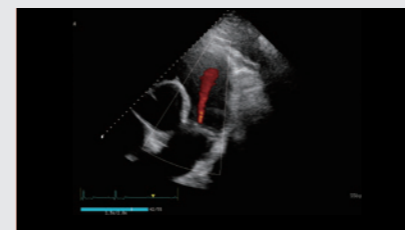


FHR

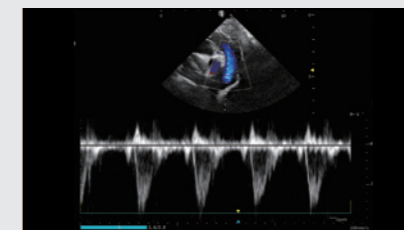
Enhanced sensitivity and superior resolution provide accurate low-velocity blood flow visualization for realistic hemodynamic assessments.



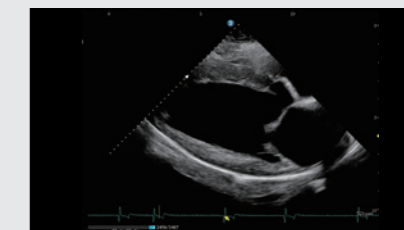
## Smart Imaging for Comprehensive Animal Cardiac Care



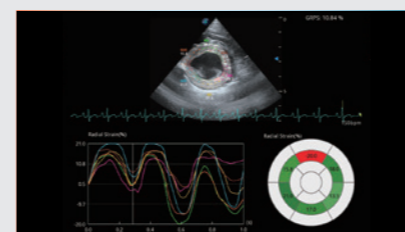
Pulmonary Valve Regurgitation



Pulmonary Artery Blood Flow PW Mode

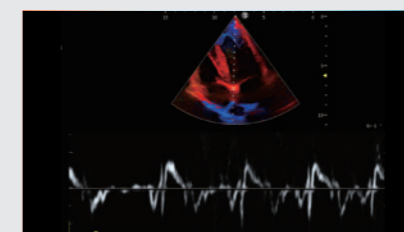


Left Ventricle Long-axis B-mode



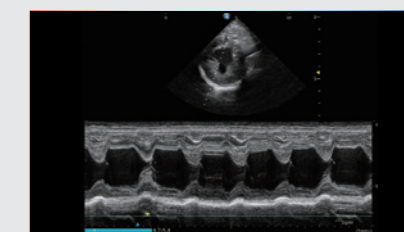
Short-axis (MQA)

Precise left ventricular motion detection with 2D speckle tracking for accurate strain, velocity, and displacement analysis.



TDI PW Mode

Tissue Doppler Imaging for precise assessment of myocardial motion and velocity, aiding in evaluation of heart function.



Short-axis M-mode of the Ventricles

M-mode for detailed cardiac motion analysis, supporting AMM and M-mode post-processing for enhanced diagnostic precision.

# Veterinary-Focused Accessories: Durable, Dustproof, and Waterproof Design

# Ergonomic Design and Streamlined Mobility for Ultrasound Excellence



Main Unit Probe Protective Cover



Dust Cover on Probe Slots



Silicone Panel Film



Dust Cover on Main Unit



1150 mm  
830 mm



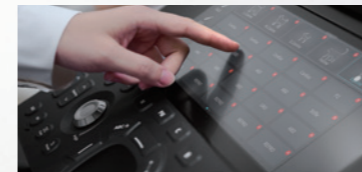
Magnetic Charging Port



Battery Level Display



Small Probe Slot Designed for Animals



Touchscreen Design



Mobile Trolley Case with Probe Storage Bag



Mobile Battery with High Capacity



Trackball (Button)  
ProPet X11



Touchpad (Waterproof)  
ProPet E11